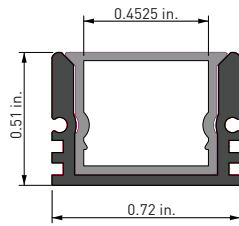


Naro® 3 Recessed Channel



shown with closed end cap



open plastic end cap



closed and open silicone end caps



mounting clip & screw

The Naro models of Continua Channels are designed for recessing into wood, cabinetry, and indoor materials and provide an excellent heat sink to cool and prolong the life of LED tape light. The form factor of Naro 3 is designed for an installation where the channel is completely flush with the surrounding material. Can be configured for installation in wet locations using dry location LED tape light.

- Thermally-balanced design for maximum cooling
- Channel covers protect LED tape light
- Diffuser covers provide smooth light diffusion with no hotspots
- Full range of accessories for a great-looking installation
- Complete kits available to create a finished fixture

Item #	Description
AL-50-14-0111-KIT	4 ft. kit: 1 channel, 1 diffuser cover, 2 pair pack of plastic & silicone end caps, 5 mounting clips/screws, 1 silicone sealant
AL-50-14-0121-KIT	8 ft. kit: 1 channel, 1 diffuser cover, 4 pair pack of plastic & silicone end caps, 9 mounting clips/screws, 1 silicone sealant
AL-50-14-0011-AL	channel - 4 ft. - aluminum finish * - includes 5 mounting clips/screws
AL-50-14-0021-AL	channel - 8 ft. - aluminum finish * - includes 9 mounting clips/screws
AL-50-14-9902-FRT	diffuser cover - 4 ft.
AL-50-14-9903-FRT	diffuser cover - 8 ft.
AL-50-14-9922	aluminum bar - 4 ft.
AL-50-14-9923	aluminum bar - 8 ft.
AL-50-14-9951-WH	plastic end caps 2 pair pack: 2 open, 2 closed w/screws - white
AL-50-14-9956-WH	plastic end caps 10 pair pack: 10 open, 10 closed w/screws - white
AL-50-14-9961-WH	silicone end caps 2 pair pack: 2 open and 2 closed - white
AL-50-14-9966-WH	silicone end caps 10 pair pack: 10 open and 10 closed - white
AL-50-14-9981	mounting clips/screws - 5 pack

*Channels are also available in custom powder-coated finishes, including white and black, by special order.

This channel is compatible with selected tape light models only, see the "Continua Channel & Tape Light Compatibility Chart" PDF on the Resources page on our website for information.